



**FLAMINGO**  
FURNITURE TO FALL IN LOVE WITH

## FLAMINGO FURNITURE ANTI-TIP FIXING INSTRUCTIONS

### **PARTS**

1. 2 X L SHAPE BRACKETS 23MM X 23MM X 1.5MM THICKNESS X 11MM WIDE
2. 1 X PAN HEAD SCREW 8G X 30MM LENGTH \*\*THIS IS FOR THE WALL STUD
3. 1 X CHIP BOARD SCREW 8G X 30MM LENGTH \*\* THIS IS FOR BACK OF UNIT
4. 1 X CABLE TIE 300MM

### **INSTRUCTIONS**

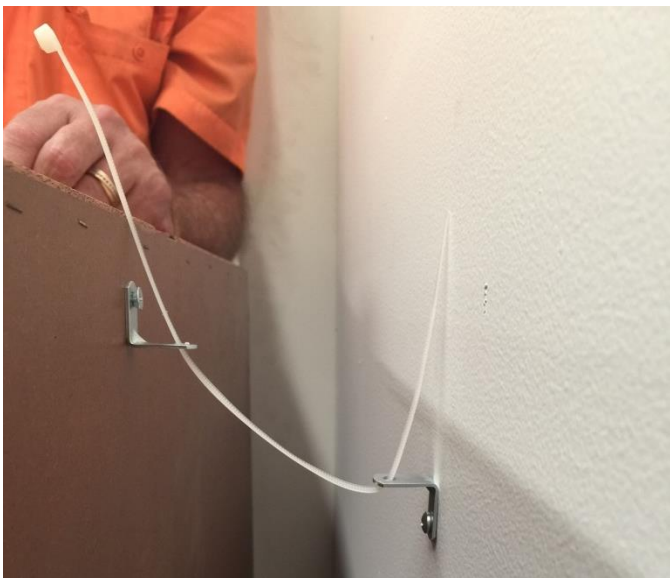
1. Take Part 1 (1 X L SHAPE BRACKET) and Part 3 (1 X CHIP BOARD SCREW 8G X 30MM LENGTH) and screw into Solid part on the back of the furniture, approximately 30mm from top of unit



2. Locate the Wall stud and Take Part 1 (1 X L SHAPE BRACKET) and Part 2 (1 X PAN HEAD SCREW 8G X 30MM LENGTH) and screw bracket into Wall stud



3. Thread Part 4 (1 X CABLE TIE 300MM) through both openings on L shape Bracket that you already have fixed to furniture and wall, Pull until Cable tie is secure



## **WARNING**

THIS PRODUCT IS NOT A SUBSTITUTE FOR ADULT SUPERVISION. DO NOT ALLOW CHILDREN TO CLIMB ON FURNITURE. NEVER LEAVE YOUR CHILD UNATTENDED